

Fixed Installation Ports & Probes

Filter Leak Test Accessories



Save time and reduce exposure with fixed installation ports

These ports are designed to assist aerosol injection into ducting or HVAC units or aerosol sampling of the upstream particle concentration. Designed to meet ISO 14644-3, ATI's fixed installation ports can be added to new or existing installations to mitigate the risk of infection and exposure of non-filtered air into the clean space by eliminating the need to remove ceiling tiles for leak testing.



Applications

- Cleanroom Certification
- Pharmaceutical Cleanroom Testing
- Nuclear Cleanroom Testing

Benefits

- One Time Installation
- Significant Reduction in Certification Time and Expense
- Convenient and Sanitary Access Point
 - Eliminates Exposure to Non-Filtered Air and Contaminates
 - Reduce Risk of Infection



FIXED INSTALLATION PORTS & PROBES

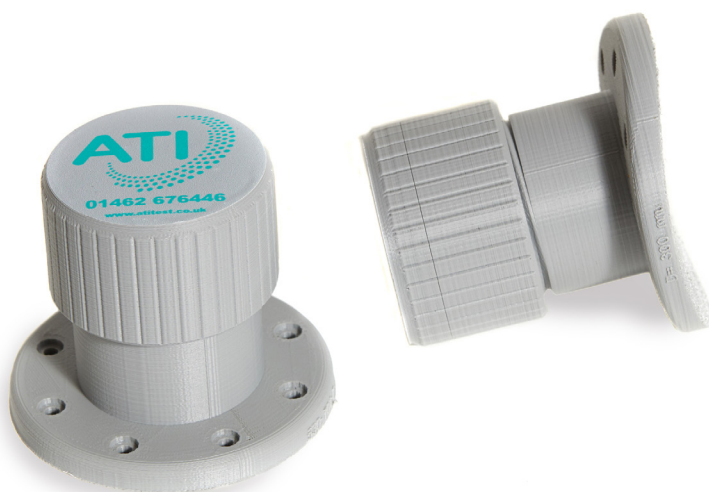
ATI's Filter Leak Test Accessories are uniquely designed to significantly reduce the time and expense of certifying clean rooms.

	In-Situ (Fixed Installation)	Portable (Carried to Site)	Aerosol Injection (Generator Side)	Aerosol Sampling (Photometer Side)
Fixed Installation				
Aerosol Injection Port	✓		✓	
Aerosol Sampling Port	✓			✓
Ports for Inserting L-Probe	✓			✓
Specialized Sampling Probes				
T-Probe	✓			✓
L-Probes (Left-, Right-hand)		✓		✓

Fixed Aerosol Injection Ports

Fixed aerosol injection ports can be easily installed to a ceiling duct in a clean room or an adjoining room that feeds the cleanroom.

- Can be connected to Positive Injection Pump (PIP) tubing
- Compatible with Sparge Pipes to assist mixing



Fixed Aerosol Sampling Port

Fixed aerosol sampling ports allow air-tight connections to the photometer for sampling upstream aerosol challenge from a fixed ceiling point.

- Provides a fast, convenient and sanitary access point for upstream measurement
- Allows for remote connection



T and L Scanning Probes

The perfect solution for scanning filters that are difficult to access

Safe-change (bag-in-bag-out) filter installations have traditionally been tested volumetrically, but this test is much less sensitive than the scan test. There may be defects in a HEPA filter installation that will pass the volumetric test, which could compromise safety or the environment. To allow a scan test for filters which are difficult to access, ATI has developed an innovative scan test with our T- and L-Probes.





FIXED INSTALLATION PORTS & PROBES

FIXED INSTALLATION FILTER LEAK TEST EQUIPMENT

Fixed Installation Ports

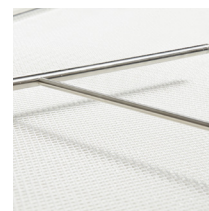
Fixed Aerosol Injection Port	Aerosol Injection Port, flat mount	630-701
Aerosol Injection Port	Aerosol Injection Port, curved mount. *The -xxx refers to the duct diameter and is in 50mm increments.	630-701-XXX
Fixed Aerosol Sampling Port	Aerosol sampling port kit	630-700
L-Probe port	L-shaped scanning probe port	630-SP-34IN-12

Specialized Sampling Probes

L-Probe	L-shaped scanning probe	DOP315-L-1000
T-Probe	T-shaped scanning probe, st/stl, for 305mm wide filters with 920mm shaft, mechanical fitting	DOP305S-12-920RF
T-Probe	T-shaped scanning probe, st/stl, for 305mm wide filters with 3m shaft, mechanical fitting	DOP305S-12-3000RF
T-Probe	T-shaped scanning probe, st/stl, for 610mm wide filters, mechanical fittings	DOP610-RF-3000-12
T-Probe	T-shaped scanning probe, st/stl, for 610mm wide filters, mechanical fittings	DOP610-RF-920-12

T-Probe

Designed for permanent installation, the T-Probe is usually installed at point of manufacture but can also be retrofitted. The sample probe is sealed to the filter housing and a photometer sample tube is attached to the probe shaft.



- Fitted permanently, close to filter face < 10.2 cm (<4 in)
- Slower scanning rate than standard handheld probe < 2.5 cm (<1 in) / sec

L-Probe and Probe Port

The L-Probe is inserted through a permanently installed port for the HEPA filter test. The sample probe is sealed to the port and the photometer aerosol sample tube is attached to the probe shaft.



- Designed for temporary installation and is inserted through a permanent port at time of test
- Right-handed and left-handed L-probe

To insert the L-probe for scanning difficult-to-access filters, a fixed port must be installed to the filter housing.

